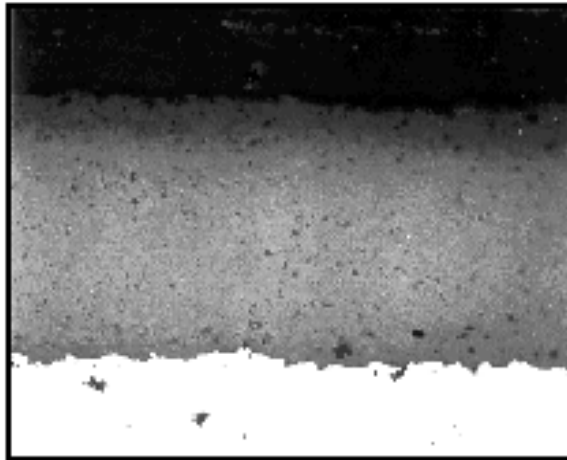
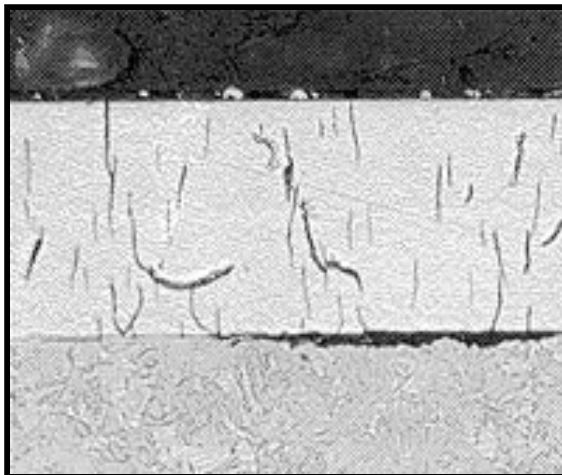


THERMAL SPRAY COATINGS OUTPERFORM HARD CHROME



Thermal spray has a continuous surface with less than 1% porosity



Microstructure of hard chrome shows micro-cracks which facilitate corrosion

Thermal Sprayed Coating Advantages:

- * Increased Wear Resistance & Service Life
- * Improved Corrosion Resistance
- * Better Bond Characteristics
- * Bonds to a Wider Range of Materials
- * Higher Hardness
- * Thick Coating Capability
- * No Part Size Limitation
- * Does NOT Affect Substrate
- * No Substrate Fatigue Debit
- * No Hydrogen Embrittlement of Substrate
- * Decreased Rework Frequency